

Calendar of Events

January - June 2022

While it's taking us a little longer than usual to plan, we are very excited for our burgeoning 2022 calendar of events! The calendar below is only the beginning of what we'll have to offer. Please be sure to check www.WoodMemorialLibrary.org and www.Nowashe.org for additional calendar offerings and subscribe at either site to receive email notifications!

AUTHOR EVENT: GAIL OLMSTEAD

Thursday, January 13
6:00 - 7:00pm, FREE

Author Gail Ward Olmsted will talk about her new historical fiction novel *Landscape of a Marriage: Central Park Was Only the Beginning*. Learn about Hartford born, park designer, Fredrick Law Olmsted and "the Olmsted effect" during this presentation. Explore the impact his parks have made, and some little-known facts on Olmsted and Central Park.

AUTHOR EVENT: ROBERT HARRIS

Thursday, February 3
5:30 - 6:30pm, FREE

In honor of Black History Month, join Robert Harris author of *Historical Moments: Military Contributions of African Americans* as he speaks about "Historical Moments" that help fill the gap in our nation's history books on the military contributions of the African American.

ANN MASI MEMORIAL VACATION FUN: AESOP'S FABLES

Thursday, February 17
10:00 - 10:45am

Perfect for younger audiences, classic tales from the legendary Greek storyteller will delight both the young and old. Bright Star Theatre's professional actors bring stories to life, encouraging audience participation and celebrating moral lessons.

PERFORMANCE LECTURE SERIES: LET IT SHINE

Thursday, February 17
2:00 - 2:45pm
Fee \$5/student, \$15/adult

This professional production from North Carolina's Bright Star Theatre is designed to provide an honest and accessible portrayal of the American struggle for Civil Rights. Key figures from the time period are brought to life and celebrated. The program is best appreciated by audiences in 3rd grade - adult.

VIRTUAL FORUM: NATIVE AMERICAN STORYTELLING

Thursday, February 24
7:00 - 8:30pm

Native Americans relied on oral history to convey morals, explanations, and other teachings. View several stories by northeastern Native Americans and either observe or engage in meaningful discussion.

PERFORMANCE LECTURE SERIES: MARTHA WASHINGTON

Wednesday, March 23
2:00pm, Fee \$20

Actress Maggie Worsdale portrays our first, First Lady and offers an intimate and engaging look into Martha's life, loves and losses.

ANN MASI MEMORIAL GARDEN LECTURE

Wednesday, April 13
7:00pm

Connecticut has a myriad of spring wildflowers. Join the Assistant Director of the Roaring Brook Nature Center to discover why they bloom in the spring, where to find them, how they got their names and what makes these plants so special.

PERFORMANCE LECTURE SERIES: LIZZIE BORDEN

Wednesday, April 27
1:00pm, Fee \$20

On a scorching hot day in Fall River, in August of 1892, a heinous crime occurred. Spinster Lizzie Borden was accused, tried and acquitted for the vicious ax murders of her father and stepmother. This true unsolved mystery has fascinated people ever since.

AUTHOR EVENT: SARAH PRAGER

Thursday, June 2
6:00 - 7:00pm, FREE

In honor of Pride Month, join author Sarah Prager as she speaks about LGBTQ+ people throughout history. Prager has received critical praise for her writing, including five award nominations for her books. Her next book is scheduled to be released in May 2022.

PERFORMANCE LECTURE SERIES: DIANA OF LOVE

Friday, June 10
2:00 - 3:30pm, or
7:00 - 8:30pm, Fee \$25

In summer 2022, Wood favorite *History at Play, LLC* debuts a new program twenty-five years after Princess Diana's tragic passing. *Diana of LOVE™* follows the icon's life behind the scrutinized pages of worldwide headlines, pulling back the curtain to reveal a woman who gave so much to so many, while concealing her own mental health struggles.

CONNECTICUT OPEN HOUSE DAY: NOWASHE VILLAGE

Saturday, June 11
10:00am - 11:00am
FREE, but donations are encouraged

Join us for our seasonal opening of our outdoor Indigenous Peoples' Museum, located directly behind Wood Memorial Library!

GARDEN TOUR AND PLANT SALE

Sunday, June 12
9:30am - 4pm
\$20/\$25 day of tour

Celebrate South Windsor by touring 7 unique gardens and Dzen Tree Farm.

ANNUAL GOLF TOURNAMENT

Thursday, June 16
10:00am Shotgun Start

One of the best values in the golf! Held at Top Stone Golf Club, tournament play includes lunch, on-course drinks, raffles and a hearty après golf reception.

NONPROFIT ORGANIZATION U.S. POSTAGE PAID HARTFORD, CT PERMIT #751



Gingerbread House Festival

Free & Open to the Public

Celebrate "Happy Golden Days" this year at one of the largest gingerbread house festivals in New England. The Friends of Wood Memorial Library & Museum's 11th Annual Gingerbread House Festival opens Friday, November 26th and runs thru Saturday, December 19th, 2021. We are celebrating the 50th Anniversary of the Friends with a "Happy Golden Days" theme.

Gaze upon row after row of creative and colorful gingerbread creations, all made by regional artisans and bakers, students and community members, expert and beginner alike.

This year we're bringing back the friendly competition element of the festival. Our team of three, local celebrity judges, will choose the gingerbread masterpieces they think best represent different categories such as wonderfully whimsical and commendable use of candy. Don't forget to stop by "Ye Olde Gingerbread Shoppe" for the opportunity to take home a bit of the magic with many holiday themed gifts and treats.

For more details about the festival visit www.WoodMemorialLibrary.org.

"Happy Golden Days"
The Wood's 11th Annual Gingerbread House Festival

FREE and Open to the Public
November 26 thru December 19, 2021
Thursdays & Fridays 10am-7pm, Saturdays & Sundays 10am-5pm
Closed Mondays, Tuesdays, and Wednesdays



THE WOOD

Where history, nature, and the arts come alive.



Winter 2021

Archive Activities

In 2020, a plan was developed for a comprehensive inventory of the Friends' archives. A two-year project, when completed it will produce an improved master list of all our collections. This is a major accomplishment for any institution and puts us in a strong position to improve online access. Volunteers are systematically examining all collection items in archival storage areas and throughout the building.

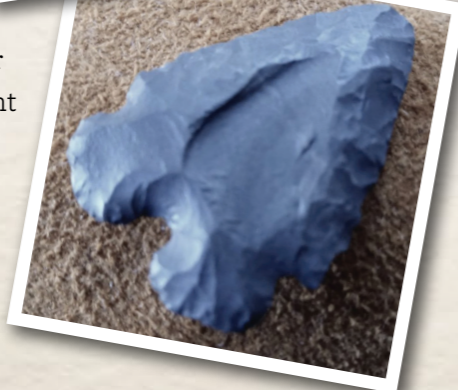


Volunteers Fran Nadeau and Julie Runkle

In the short term, we will have an updated item location list, and for longer term planning, we will be able to assess the reallocation of space, collocate separated collections, and establish priorities for future processing and description projects.

Educational Experiences

This year we celebrated the inaugural season of Nowashe Village, welcoming more than one thousand visitors from all over New England. Nowashe was supported by longtime docents, many new volunteers and Native American presenters from several northeast tribal nations. Many patrons and Native Americans have donated artifacts and hand-made objects to support our educational mission, including a bear pelt with paws, a copper knife and a Susquehanna bifurcated point that is approximately 8,000 years old.



The immersive setting of Nowashe sparks an understanding of and appreciation for the Indigenous culture that flourished along the

Connecticut River for thousands of years. Many elements of Native language and culture permeate our everyday lives, often without us realizing it! Nowashe Village is available for private group tours, field trips, homeschool groups, scout troops and more. Virtual and hybrid programs are also available. [Visit Nowashe.org](http://VisitNowashe.org) for more information.

A Community of Collaborators

This year, the Friends of Wood Memorial Library and Museum celebrated 50 years of serving the community as a public library, museum, archives, education and cultural center. The organization has touched so many people over the last half century from the very young to the not so young anymore. There have even been successive generations of "Friends" gathering and celebrating, learning and exploring.

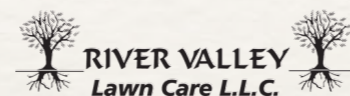


"Friends" Sue, Ginny, and Maureen

Special exhibits have already celebrated the many people who have given of their time and talents to create such a strong and vibrant community, and they will continue into 2022! We look forward to the next half century of collaborations with groups like the Book Club on the Go, Hartford Audubon Society, Down to Earth Garden Club and South Windsor Cultural Arts.

Consider getting involved and becoming a "friend"!

Proud sponsors of the Friends of Wood Memorial Library & Museum



Popular E-Mail Series Closing in on 150 issues!

On March 26, 2020, we launched our first Daily Dose email. The topic of this brief email changed daily, usually highlighting our collections and other local history. All of our staff took turns writing content, and topics ranged from such things as the Spanish Flu (4/3/20) to the Three Sisters Garden (5/27/20). What we thought would last a couple of weeks lasted 72 consecutive days! From there we emailed only a couple of times per week.

Then, beginning on Friday, September 18, 2020, Musings from Main began. This weekly e-series has grown in length and complexity. Some featured guest writers, video or audio links, and some have been republished by organizations in other parts of the country. Email open rates remain steadily high compared to industry standards, and our email list has grown substantially. We are thrilled to have found a way to connect with the community, both near and far, in a both educational and entertaining way.

Not receiving Musings from Main but would like to?
Visit the "Get Involved" section of our website and subscribe today!

Late to the party? Visit our website to view an exhibit collection of a variety of Daily Dose and Musings from Main emails.

Thanks for Being a Friend!

Did you know that less than 6% of our annual budget is supported by the Town of South Windsor?

As a private nonprofit organization, the Friends rely on individual giving, earned income, grants, sponsorships and fundraisers to do our work. A small annual stipend from the Town of South Windsor helps to subsidize a portion of our archival budget to provide research support for residents, developers, retail outlets and even the town itself. When you support the Friends with gifts of money or time, you are helping to preserve history and allowing thousands each year to learn, explore, be inspired and enjoy.

